

## OCEAN GUARD PENDANT BUOYS



BUOY MODEL	BUOYANCY NET		BUOY WEIGHT		DIAMETER OVERALL		BUOY LENGTH		HEIGHT OVERALL		WORKING LOAD	
	LBS	KG	LBS	KG	FT	M	FT	M	FT	M	LBS	TONS
PB-25	5,511	2,500	1,223	555	4.5	1.4	6.8	2.1	7.3	2.2	150,000	68
PB-50	11,023	5,000	2,123	963	6.0	1.8	7.2	2.2	8.7	2.7	150,000	68
PB-75	16,534	7,500	3,184	1,444	6.5	2.0	9.2	2.8	9.2	2.8	150,000	68
PB-100	22,046	10,000	2,735	1,241	6.5	2.0	11.0	3.4	9.3	2.8	150,000	68
PB-150	33,069	15,000	4,020	1,823	8.0	2.4	11.5	3.5	10.9	3.3	150,000	68
PB-200	44,092	20,000	4,922	2,233	8.5	2.6	13.5	4.1	11.5	3.5	200,000	91
PB-250	55,115	25,000	5,827	2,643	9.0	2.7	15.0	4.6	11.8	3.6	200,000	91
PB-300	66,138	30,000	6,688	3,034	9.5	2.9	16.0	4.9	12.8	3.9	200,000	91
PB-350	77,160	35,000	10,581	4,800	10.3	3.1	16.8	5.1	14.5	4.4	250,000	114
PB-400	88,183	40,000	11,449	5,193	10.5	3.2	18.0	5.5	16.3	5.0	250,000	114

\* Actual values for above sizes may vary +/- 15% due to variations in materials and tolerances.

## OCEAN GUARD MODULAR ANCHOR PENDANT BUOYS



BUOY MODEL	BUOYANCY NET		NUMBER OF MODULES	DIAMETER OVERALL		THROUGH PIPE DIAMETER	
	LBS	KG		FT	M	IN	MM
MAPB2-4	8,818	4,000	2	6.6	2.0	6.0	152
MAPB4-8	17,637	8,000	4	6.6	2.0	6.0	152
MAPB2-8	17,637	8,000	2	7.5	2.3	6.0	152
MAPB4-16	35,273	16,000	4	7.5	2.3	6.0	152
MAPB2-11	24,250	11,000	2	9.8	3.0	8.0	203
MAPB4-22	48,501	22,000	4	9.8	3.0	8.0	203
MAPB2-17	37,478	17,000	2	10.5	3.2	10.0	254
MAPB4-34	74,956	34,000	4	10.5	3.2	10.0	254
MAPB2-23	50,705	23,000	2	10.5	3.2	10.0	254
MAPB4-46	101,411	46,000	4	10.5	3.2	10.0	254

\* Actual values for above sizes may vary +/- 15% due to variations in materials and tolerances.

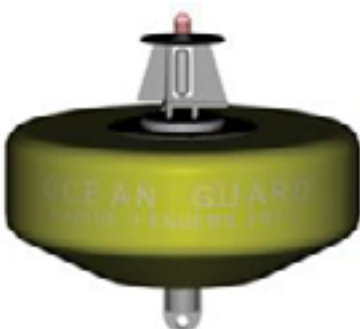
## OCEAN GUARD OCEANOGRAPHIC BUOYS



BUOY MODEL	BUOYANCY NET		FLOTATION WEIGHT		TOTAL WEIGHT		DIAMETER OVERALL		DIAMETER INTERNAL		FLOTATION HEIGHT		TOWER HEIGHT	
	LBS	KG	LBS	KG	LBS	KG	FT	M	FT	M	FT	M	FT	M
OG-10	2,205	1,000	60	27	513	233	5.4	1.6	2.2	0.7	2.3	0.7	5.6	1.7
OG-15	3,307	1,500	72	33	606	275	6.1	1.9	2.3	0.7	2.4	0.7	5.6	1.7
OG-20	4,409	2,000	99	45	752	341	6.5	2.0	2.5	0.8	2.6	0.8	6.1	1.9
ATLAS-3	5,000	2,268	130	59	1,200	544	7.4	2.3	3.2	1.0	3.2	1.0	7.0	2.1

\* Actual values for above sizes may vary +/- 15% due to variations in materials and tolerances.

## OCEAN GUARD NAVIGATIONAL AND MARKER BUOYS



BUOY MODEL	BUOYANCY NET		BUOY WEIGHT		BUOY DIAMETER		BUOY BODY HEIGHT	
	LBS	KG	LBS	KG	FT	M	FT	M
NAV-100	221	100	194	88	3.0	0.9	2.3	0.7
NAV-200	441	200	399	181	3.8	1.2	3.0	0.9
NAV-500	1,103	500	650	295	4.9	1.5	3.0	0.9
NAV-750	1,654	750	981	445	6.7	2.0	3.3	1.0
NAV-1000	2,205	1,000	1,816	824	8.5	2.6	4.2	1.3
NAV-3000	6,615	3,000	3,112	1,412	10.0	3.0	4.5	1.4
NAV-5000	11,025	5,000	4,462	2,024	10.2	3.1	6.0	1.8
NAV-7500	16,538	7,500	6,703	3,040	11.8	3.6	6.6	2.0
NAV-10000	22,050	10,000	7,845	3,558	13.2	4.0	6.0	1.8

\* Actual values for above sizes may vary +/- 15% due to variations in materials and tolerances.