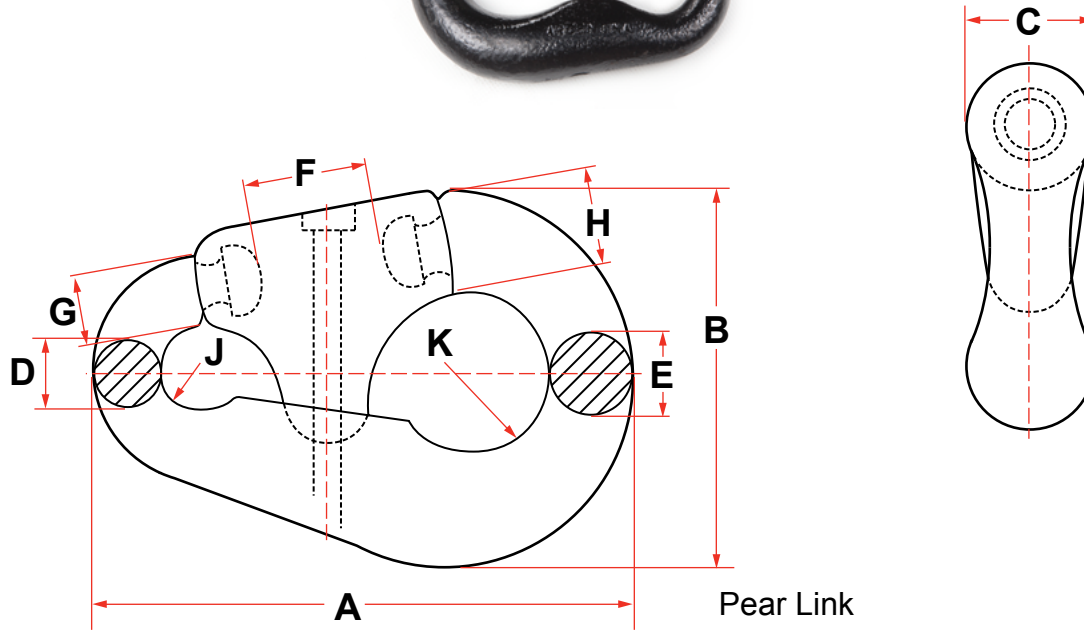


## PEAR SHAPE ANCHOR JOINING LINK



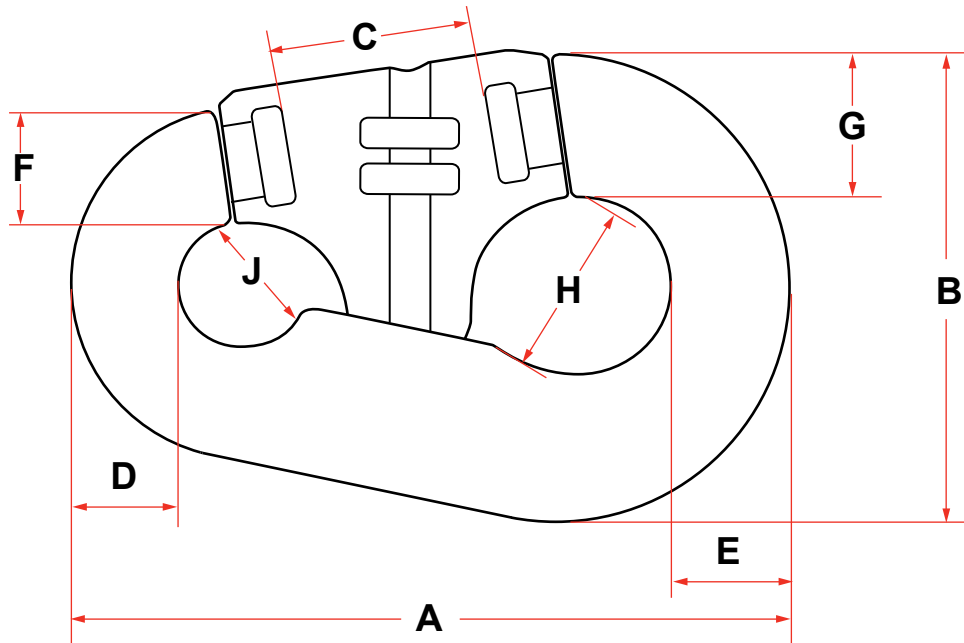
Pear Link

### GRADE 3

N°	CHAIN SIZE		A (MM)	B (MM)	C (MM)	D (MM)	E (MM)	F (MM)	G (MM)	H (MM)	J (MM)	K (MM)	WEIGHT		PROOF TEST KGF	BREAK TEST KGF
	MM	INCHES											KG	LBS		
2	19-24	3/4 - 15/16	194	132	38	24	32	57	24	35	17	30	3.6	8	34000	48500
3	25-30	1 - 1-3/16	238	167	46	30	38	66	33	45	19	35	6.5	14	53000	75700
4	32-40	1-1/4 - 1-9/16	299	206	59	40	48	83	40x45	56	26	43	14.5	32	91400	131000
5	42-51	1-5/8 - 2	378	260	76	51	64	100	51x60	74	32	52	27.0	60	145400	207700
6	52-60	2-1/16 - 2-3/8	454	313	92	60	76	121	62x73	88	37	64	49.0	107	199600	285200
7	62-79	2-7/16 - 3-1/8	562	376	121	79	95	149	86x79	111	48	76	92.0	203	332100	474500
8	81-92	3-3/16 - 3-5/8	654	419	133	92	124	149	111x102	130x133	54	79	149.0	328	434800	621200
9	94-95	3-11/16 - 3-3/4	692	435	146	98	130	159	124x137	141	57	83	236.0	520	462300	660100
10	97-102	3-13/16 - 4	889	572	191	121	165	191	130x148	181	73	108	386.0	850	522100	746000
11	103-108	4-1/16 - 4-1/4	940	610	203	127	175	203	156	200	76	111	418.0	920	577000	825000
12	110-114	4-5/16 - 4-1/2	991	648	216	133	184	216	165x167	210x200	105	114	459.0	1010	637300	910900

To convert to lbs., multiply by 2.2046

## PEAR SHAPE ANCHOR JOINING LINKS GRADE ORQ & R4



NO.	CHAIN SIZE (MM)	DIMENSIONS (MM)								
		A	B	C	D	E	F	G	H	J
4	32 - 40	298	207	89	41	50	45	60	83	52
5	42 - 51	380	264	100	52	65	60	84	109	65
6	52 - 60	480	337	125	66	83	81	103	142	86
7	62 - 79	570	370	155	85	96	92	113	140	98
8	81 - 92	655	430	162	99	129	119	131	162	115
10	97 - 102	900	580	192	127	168	151	181	207	150

NO	GRADE R4		GRADE ORQ	
	PROOF LOAD (KN)	BREAK LOAD (KN)	PROOF LOAD (KN)	BREAK LOAD (KN)
4	1410	1789	914	1377
5	2243	2845	1454	2191
6	3048	3867	1976	2978
7	5079	6443	3292	4962
8	6699	8497	4342	6544
9	7096	9001	4599	6932
10	8054	10217	5220	7868

To convert to lbs., multiply by 225