

## OCEAN GUARD PENDANT BUOYS



BUOY MODEL	BUOYANCY NET		BUOY WEIGHT		DIAMETER OVERALL		BUOY LENGTH		HEIGHT OVERALL		WORKING LOAD	
	LBS	KG	LBS	KG	FT	M	FT	M	FT	M	LBS	TONS
PB-25	5,511	2,500	1,223	555	4.5	1.4	6.8	2.1	7.3	2.2	150,000	68
PB-50	11,023	5,000	2,123	963	6.0	1.8	7.2	2.2	8.7	2.7	150,000	68
PB-75	16,534	7,500	3,184	1,444	6.5	2.0	9.2	2.8	9.2	2.8	150,000	68
PB-100	22,046	10,000	2,735	1,241	6.5	2.0	11.0	3.4	9.3	2.8	150,000	68
PB-150	33,069	15,000	4,020	1,823	8.0	2.4	11.5	3.5	10.9	3.3	150,000	68
PB-200	44,092	20,000	4,922	2,233	8.5	2.6	13.5	4.1	11.5	3.5	200,000	91
PB-250	55,115	25,000	5,827	2,643	9.0	2.7	15.0	4.6	11.8	3.6	200,000	91
PB-300	66,138	30,000	6,688	3,034	9.5	2.9	16.0	4.9	12.8	3.9	200,000	91
PB-350	77,160	35,000	10,581	4,800	10.3	3.1	16.8	5.1	14.5	4.4	250,000	114
PB-400	88,183	40,000	11,449	5,193	10.5	3.2	18.0	5.5	16.3	5.0	250,000	114

\* Actual values for above sizes may vary +/- 15% due to variations in materials and tolerances.

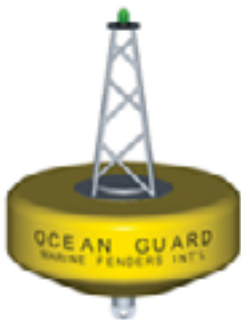
## OCEAN GUARD MODULAR ANCHOR PENDANT BUOYS



BUOY MODEL	BUOYANCY NET		NUMBER OF MODULES	DIAMETER OVERALL		THROUGH PIPE DIAMETER	
	LBS	KG		FT	M	IN	MM
MAPB2-4	8,818	4,000	2	6.6	2.0	6.0	152
MAPB4-8	17,637	8,000	4	6.6	2.0	6.0	152
MAPB2-8	17,637	8,000	2	7.5	2.3	6.0	152
MAPB4-16	35,273	16,000	4	7.5	2.3	6.0	152
MAPB2-11	24,250	11,000	2	9.8	3.0	8.0	203
MAPB4-22	48,501	22,000	4	9.8	3.0	8.0	203
MAPB2-17	37,478	17,000	2	10.5	3.2	10.0	254
MAPB4-34	74,956	34,000	4	10.5	3.2	10.0	254
MAPB2-23	50,705	23,000	2	10.5	3.2	10.0	254
MAPB4-46	101,411	46,000	4	10.5	3.2	10.0	254

\* Actual values for above sizes may vary +/- 15% due to variations in materials and tolerances.

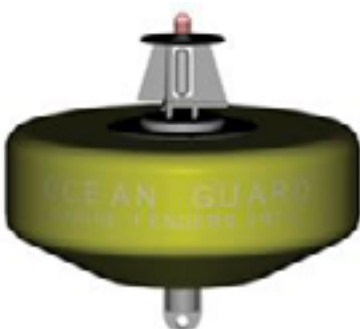
## OCEAN GUARD OCEANOGRAPHIC BUOYS



BUOY MODEL	BUOYANCY NET		FLOTATION WEIGHT		TOTAL WEIGHT		DIAMETER OVERALL		DIAMETER INTERNAL		FLOTATION HEIGHT		TOWER HEIGHT	
	LBS	KG	LBS	KG	LBS	KG	FT	M	FT	M	FT	M	FT	M
OG-10	2,205	1,000	60	27	513	233	5.4	1.6	2.2	0.7	2.3	0.7	5.6	1.7
OG-15	3,307	1,500	72	33	606	275	6.1	1.9	2.3	0.7	2.4	0.7	5.6	1.7
OG-20	4,409	2,000	99	45	752	341	6.5	2.0	2.5	0.8	2.6	0.8	6.1	1.9
ATLAS-3	5,000	2,268	130	59	1,200	544	7.4	2.3	3.2	1.0	3.2	1.0	7.0	2.1

\* Actual values for above sizes may vary +/- 15% due to variations in materials and tolerances.

## OCEAN GUARD NAVIGATIONAL AND MARKER BUOYS



BUOY MODEL	BUOYANCY NET		BUOY WEIGHT		BUOY DIAMETER		BUOY BODY HEIGHT	
	LBS	KG	LBS	KG	FT	M	FT	M
NAV-100	221	100	194	88	3.0	0.9	2.3	0.7
NAV-200	441	200	399	181	3.8	1.2	3.0	0.9
NAV-500	1,103	500	650	295	4.9	1.5	3.0	0.9
NAV-750	1,654	750	981	445	6.7	2.0	3.3	1.0
NAV-1000	2,205	1,000	1,816	824	8.5	2.6	4.2	1.3
NAV-3000	6,615	3,000	3,112	1,412	10.0	3.0	4.5	1.4
NAV-5000	11,025	5,000	4,462	2,024	10.2	3.1	6.0	1.8
NAV-7500	16,538	7,500	6,703	3,040	11.8	3.6	6.6	2.0
NAV-10000	22,050	10,000	7,845	3,558	13.2	4.0	6.0	1.8

\* Actual values for above sizes may vary +/- 15% due to variations in materials and tolerances.

## OCEAN GUARD CHAIN THROUGH BUOYS



BUOY MODEL	NET BUOYANCY		BUOY WEIGHT		BODY DIAMETER		BODY LENGTH		OVERALL LENGTH		THROUGH PIPE DIAMETER	
	LB	KG	LB	KG	FT	M	FT	M	FT	M	IN	MM
CTB-100	2,205	1000	1,170	570	3.6	1.1	5.8	1.7	7.0	2.1	13.0	330
CTB-150	3,307	1,500	1,345	610	4.1	1.3	5.9	1.7	7.1	2.1	13.0	330
CTB-200	4,409	2,000	1,488	675	4.5	1.4	6.2	1.9	7.7	2.4	13.0	330
CTB-225	4,960	2,250	1,842	777	4.9	1.5	6.0	2.0	7.5	2.4	15.0	381
CTB-275	6,063	2,750	2,023	840	5.1	1.6	6.6	2.1	8.0	2.6	15.0	381
CTB-350	7,716	3,500	2,698	1,060	5.1	1.6	8.6	2.9	10.0	3.4	17.0	432
CTB-400	8,818	4,000	2,791	1,159	5.3	1.7	9.0	2.6	10.3	3.1	17.0	432
CTB-450	9,921	4,500	3,076	1,395	5.5	1.8	9.2	2.6	10.5	3.1	19.0	483
CTB-550	12,125	5,500	3,440	1,560	5.8	1.8	9.8	3.2	11.0	3.7	19.0	483

\* Actual values for above sizes may vary +/- 15% due to variations in materials and tolerances.

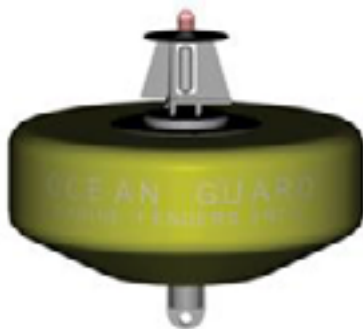
## OCEAN GUARD RECTANGULAR ANCHOR PENDANT BUOYS



BUOY MODEL	BUOYANCY NET		BUOY WEIGHT		BUOY DIMENSIONS								WORKING LOAD	
	LBS	KG	LBS	KG	LENGTH		HEIGHT		WIDTH		OVERALL HEIGHT		FT	TONS
RPB-10	2,200	1000	408	185	3.0	0.9	5.0	1.5	3.0	0.9	7.3	2.2	150,000	68
RPB-20	4,400	2000	817	371	3.6	1.1	5.0	1.5	5.0	1.5	7.3	2.2	150,000	68
RPB-40	8,800	4000	1,470	667	4.5	1.4	6.0	1.8	6.0	1.8	9.9	3.0	150,000	68
RPB-60	13,200	6000	3,060	1,388	5.0	1.5	7.0	2.1	8.5	2.6	10.9	3.3	150,000	68
RPB-80	17,600	8000	3,514	1,594	5.4	1.6	7.5	2.3	8.5	2.6	11.4	3.5	150,000	68
RPB-100	22,000	10000	4,312	1,956	6.0	1.8	9.0	2.7	8.1	2.5	12.6	3.8	150,000	68
RPB-120	26,400	12000	4,641	2,105	6.5	2.0	9.5	2.9	8.4	2.6	13.4	4.1	150,000	68
RPB-140	30,800	14000	5,835	2,647	6.5	2.0	10.5	3.2	9.0	2.7	14.8	4.5	200,000	91
RPB-160	35,200	16000	6,442	2,922	6.5	2.0	10.5	3.2	10.5	3.2	14.6	4.5	200,000	91
RPB-180	39,600	18000	7,195	3,264	6.5	2.0	11.5	3.5	11.0	3.4	15.6	4.8	200,000	91
RPB-200	44,000	20000	7,533	3,417	8.0	2.4	11.0	3.4	10.7	3.3	14.8	4.5	200,000	91
RPB-250	55,000	25000	8,427	3,822	8.5	2.6	12.6	3.8	10.8	3.3	16.5	5.0	200,000	91
RPB-300	66,000	30000	9,918	4,499	8.5	2.6	14.4	4.4	11.1	3.4	18.2	5.5	200,000	91

\* Actual values for above sizes may vary +/- 15% due to variations in materials and tolerances.

## OCEAN GUARD UNIVERSAL BUOYS



BUOY MODEL	NET BUOYANCY (MIN)		BUOY WEIGHT		BODY DIAMETER		BODY HEIGHT		OVERALL HEIGHT	
	LBS	KG	LBS	KG	FT	M	FT	M	FT	M
UB-1500	1,500	680	710	322	4.2	1.3	2.5	0.8	4.3	1.3
UB-2000	2,000	907	801	363	4.2	1.3	3.3	1.0	5.5	1.7
UB-2500	2,500	1,134	689	313	5.0	1.5	2.9	0.9	5.0	1.5
UB-3000	3,000	1,361	929	421	5.0	1.5	3.3	1.0	5.5	1.7
UB-4000	4,000	1,814	1,488	675	6.0	1.8	3.3	1.0	5.5	1.7
UB-5000	5,000	2,268	1,570	712	6.0	1.8	3.8	1.1	6.0	1.8

\* Actual values for above sizes may vary +/- 15% due to variations in materials and tolerances.

## UNIVERSAL BUOY END FITTINGS



Bail Eye



Pad Eye



Pick-Up Tee



Swivel Eye