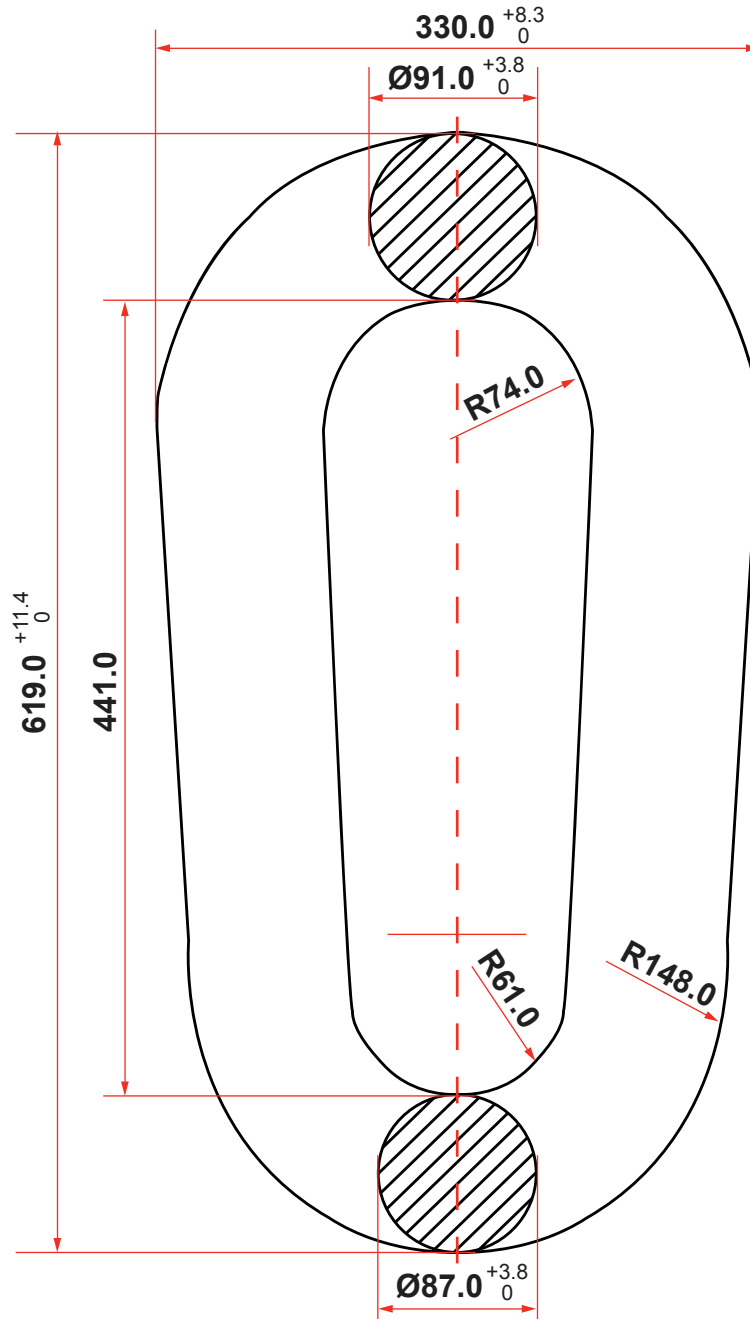
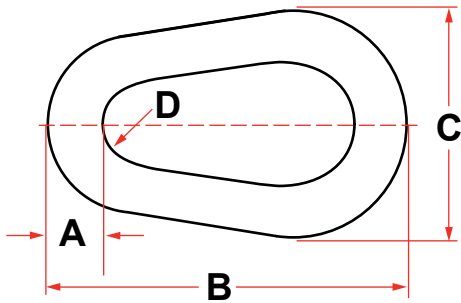


**(76MM) PEAR SHAPED RING**  
**WITH ABS CERTIFICATION**



- Notes:
- |               |           |
|---------------|-----------|
| 1. Weight     | 160lbs    |
| 2. Proof Load | 3066.4 kN |
| 3. Break Load | 4621.4 kN |

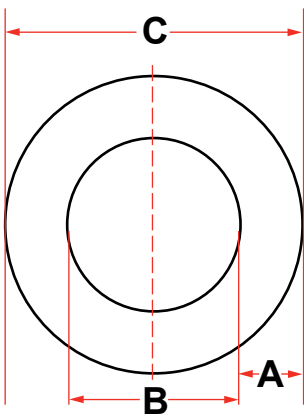
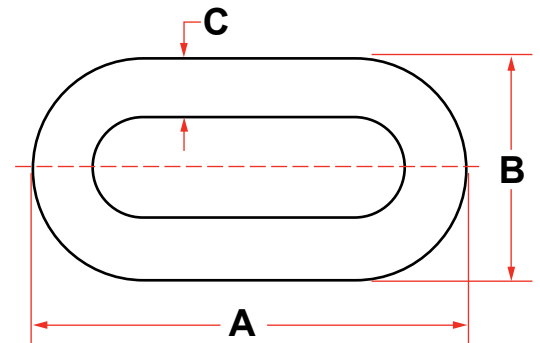
## PEAR RING



CHAIN SIZE		DIMENSIONS								WEIGHT	
		INCHES				MM					
MM	INCHES	A	B	C	D	A	B	C	D	KG	LBS
42	1-5/8	2.10	8.30	3.90	1.30	53	211	99	33	12	26
44	1-3/4	2.25	11.50	4.19	1.38	57	292	106	35	17	38
51	2	2.50	13.73	4.91	1.64	64	349	125	42	26	57
58	2-1/4	2.75	14.50	5.37	1.73	70	368	136	44	33	73
64	2-1/2	3.00	16.16	5.92	1.92	76	410	150	49	43	95
70	2-3/4	3.50	17.70	6.47	2.11	89	450	164	54	65	143
76	3	3.75	19.21	6.82	2.28	95	488	173	58	80	176
89	3-1/2	4.25	23.90	8.77	2.85	108	607	223	72	127	280
102	4	4.75	26.22	9.61	3.13	121	666	244	80	175	385

## END LINK

CHAIN SIZE		DIMENSIONS						WEIGHT	
		INCHES			MM				
MM	INCHES	A	B	C	A	B	C	KG	LBS
42	1-5/8	10.97	6.50	1.95	279	165	50	9	20
44	1-3/4	11.81	6.91	2.10	300	176	53	11	24
51	2	13.50	7.90	2.40	343	201	61	17	37
58	2-1/4	15.19	8.89	2.70	386	226	69	24	53
64	2-1/2	16.88	9.88	3.00	429	251	76	32	71
70	2-3/4	18.56	10.86	3.30	471	276	84	43	95
76	3	20.25	11.85	3.60	514	301	91	55	122
89	3-1/2	23.65	13.83	4.20	601	351	107	90	197
102	4	27.00	15.80	4.80	686	401	122	133	292



## MOORING RING

CHAIN SIZE		DIMENSIONS						WEIGHT		PROOF TEST
		INCHES			MILLIMETERS					
MM	INCHES	A	B	C	A	B	C	LBS	KG	LBS
25	1	2.125	7.2	11.22	54	183	291	26	12	83,600
32	1-1/4	2.5	9.02	14.06	64	229	357	51	23	129,000
38	1-1/2	3	10.79	16.77	76	274	426	86	39	183,500
44	1-3/4	3.5	12.76	19.84	90	324	504	143	65	247,000
51	2	4	14.41	22.44	102	366	570	207	94	318,000
58	2-1/4	4.5	16.18	25.16	114	411	639	291	132	396,000
64	2-1/2	5	17.99	27.99	127	457	711	401	182	484,000
76	3	6	21.57	33.54	152	548	852	688	312	679,000
89	3-1/2	7	25.20	39.21	178	640	996	1107	502	900,000
102	4	8	28.90	44.96	204	734	1142	1664	755	1,143,000