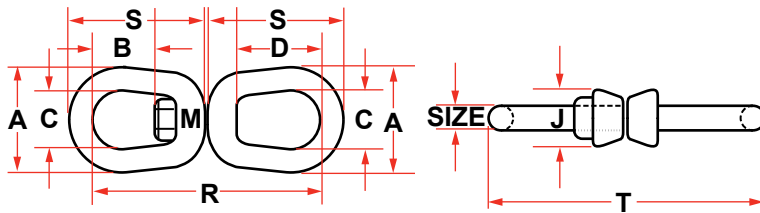


REGULAR SWIVELS

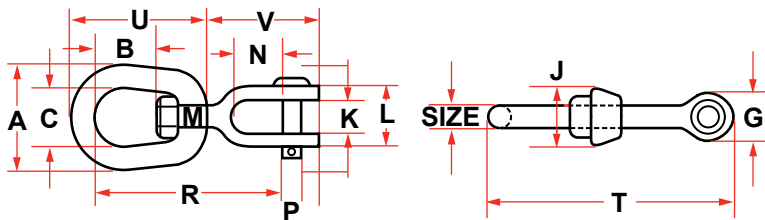


Hot Dip Galvanized
Quenched & Tempered

Meets the requirements of Federal
Specification RR-C-271D

SIZE (INCHES)	WORKING LOAD LIMIT (LBS.)	WEIGHT EACH (LBS.)	DIMENSIONS (INCHES)								
			A	B	C	D	J	M	R	S	T
1/4	850	0.21	1.25	0.69	0.75	1.06	0.69	0.31	2.94	1.69	3.44
5/16	1250	0.39	1.63	0.81	1.00	1.25	0.81	0.38	3.56	2.06	4.19
3/8	2250	0.75	2.00	0.94	1.25	1.50	1.00	0.50	4.31	2.50	5.06
1/2	3600	1.43	2.50	1.31	1.50	2.00	1.31	0.63	5.44	3.19	6.44
5/8	5200	2.50	3.00	1.56	1.75	2.38	1.50	0.75	6.56	3.88	7.81
3/4	7200	4.13	3.50	1.75	2.00	2.63	1.88	0.88	7.19	4.31	8.69
7/8	10000	6.25	4.00	2.06	2.25	3.06	2.13	1.00	8.38	5.00	10.13
1	12500	9.00	4.50	2.31	2.50	3.50	2.38	1.13	9.63	5.75	11.63
1-1/4	18000	16.37	5.63	2.69	3.13	3.69	3.00	1.38	11.13	6.75	13.35
1-1/2	45200	49.06	7.00	4.19	4.00	4.19	4.00	2.25	17.13	10.00	20.13

JAW END SWIVELS



Hot Dip Galvanized
Quenched & Tempered

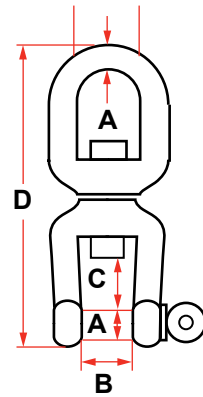
Meets the requirements of Federal
Specification RR-C-271D

SIZE (INCHES)	WORKING LOAD LIMIT (LBS.)	WEIGHT EACH (LBS.)	DIMENSIONS (INCHES)													
			A	B	C	G	J	K	L	M	N	P	R	T	U	V
1/4	850	0.25	1.25	0.69	0.75	0.69	0.69	0.47	1.03	0.31	0.88	0.25	2.63	3.38	1.69	1.69
5/16	1250	0.37	1.63	0.81	1.00	0.81	0.81	0.50	1.13	0.38	0.88	0.31	2.94	3.88	2.06	1.81
3/8	2250	0.70	2.00	0.94	1.25	1.00	1.00	0.63	1.41	0.50	1.06	0.38	3.63	4.75	2.50	2.25
1/2	3600	1.43	2.50	1.31	1.50	1.31	1.31	0.75	1.75	0.63	1.31	0.50	4.50	6.06	3.19	2.88
5/8	5200	2.48	3.00	1.56	1.75	1.63	1.50	0.94	2.06	0.75	1.50	0.63	5.31	7.31	3.88	3.44
3/4	7200	3.88	3.50	1.75	2.00	1.88	1.88	1.13	2.53	0.88	1.75	0.75	6.06	8.31	4.31	4.00
7/8	10000	5.75	4.00	2.06	2.25	2.13	2.13	1.19	2.75	1.00	2.06	0.88	7.00	9.53	5.00	4.53
1	12500	10.25	4.50	2.31	2.50	2.63	2.38	1.75	3.72	1.13	2.81	1.13	8.56	11.69	5.75	5.94
1-1/4	18000	15.75	5.69	2.69	3.13	3.13	3.00	2.06	4.31	1.38	2.81	1.38	9.44	13.13	6.75	6.38
1-1/2	45200	54.75	7.00	4.19	4.00	5.63	4.00	2.88	6.00	2.25	4.44	2.25	14.74	20.84	10.00	10.84

S181 EYE AND JAW SWIVEL

Stainless 316

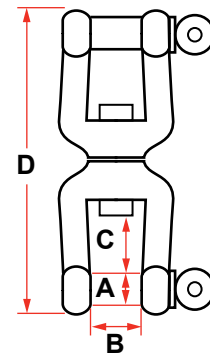
DIMENSIONS (INCHES)				WORKING LOAD LIMIT (LBS.)	WEIGHT (LBS.)
SIZE (A)	B	C	D		
1/4	0.50	0.43	2.62	600	0.14
5/16	0.62	0.62	3.62	1100	0.33
3/8	0.75	0.87	4.62	1540	0.63
1/2	1.00	1.12	6.00	2640	1.40
5/8	1.25	1.37	7.37	4750	2.38
3/4	1.50	1.62	8.62	7000	3.93



S0182 JAW AND JAW SWIVEL

Stainless 316

DIMENSIONS (INCHES)				WORKING LOAD LIMIT (LBS.)	WEIGHT (LBS.)
SIZE (A)	B	C	D		
1/4	0.50	0.43	2.50	600	0.15
5/16	0.62	0.62	3.50	1100	0.38
3/8	0.75	0.87	4.44	1540	0.74
1/2	1.00	1.12	5.88	2640	1.54
5/8	1.25	1.37	7.31	4750	2.63
3/4	1.50	1.62	8.63	7000	4.34



NOTE: COMMERCIAL TYPE