

SPILL BOOM



BOOM SPECIFICATIONS

STANDARD STYLE

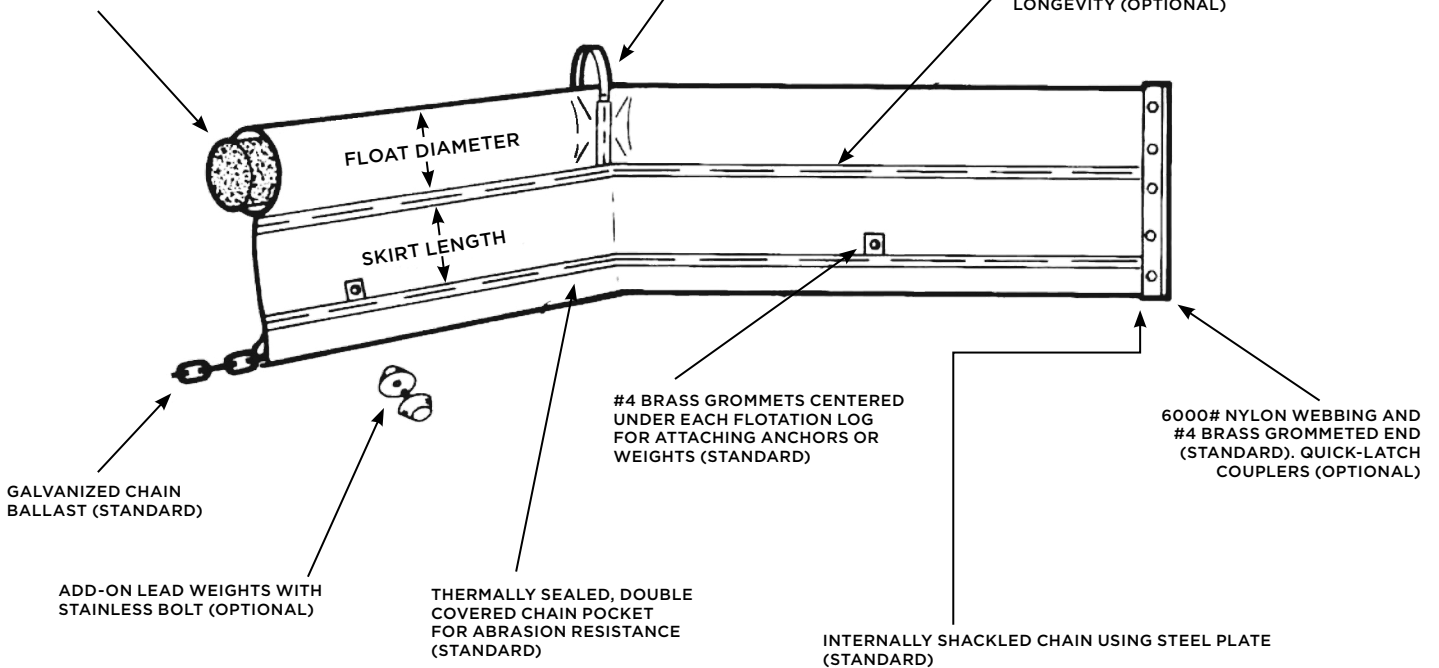
HEAVY-DUTY STYLE

	DIMENSIONS (INCHES)			DIMENSIONS (INCHES)	
	4" X 6"	6" X 12"	12" X 24" (HB)	6" X 12" (TC)	12" X 24" (TC) (HB)
FREEBOARD	4	6	12	7	13
DRAFT	6	12	24	12	24
FLOTATION LOG DIAMETER	4	6	12	6	12
BUOYANCY POUNDS PER FOOT	5.2	11.8	47.3	11.8	47.3
FABRIC					
BALLAST (GALVANIZED CHAIN)	1/4	1/4	3/8	1/4	3.8
TOP TENSION (GALVANIZED CABLE)	N	N	N	5/16	5/16
FABRIC STRENGTH	9,000#	13,000#	25,000#	13,000#	25,000#
BOTTOM TENSION STRENGTH	4,700#	4,700#	9,800#	4,700#	9,800#
TOP TENSION STRENGTH	N	N	N	9,800#	9,800#
WEIGHT PER FOOT	1.54#	1.96#	3.76#	2.16#	3.95#
STORAGE PER 100 FOOT (CU.FT.)	14	32	102	34	106

CLOSED CELL, FLEXIBLE OIL RESISTANT FOAM FLOTATION LOG THERMALLY SEALED IN POCKET (STANDARD)

NYLON HANDHOLD (OPTIONAL)

DOUBLE LAYER OF FABRIC IN LOG POCKET FOR ADDED STRENGTH AND LONGEVITY (OPTIONAL)



OPTIONAL FEATURES.

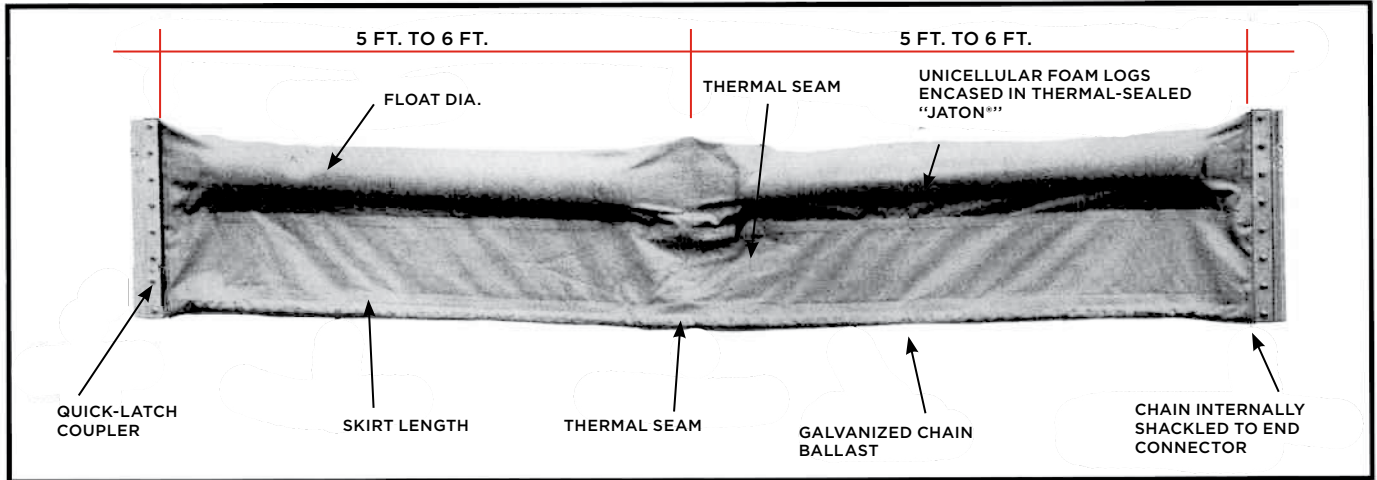
- Jaton or Jaton Plus Fabric.
- Extra grommets.
- Stainless steel grommets instead of brass.
- Lead bar ballast instead of chain.
- Double layer of fabric in log pocket.
- Short flotation logs for reel storage.
- Section lengths 6' to 300'.

OPTIONAL ACCESSORIES.

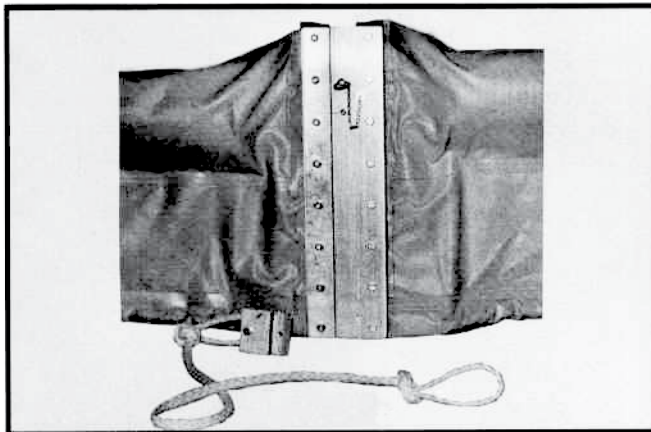
- Quick-latch couplers.
- Flex couplers.
- Tow/tie-off bridles.
- Bulkhead connectors.
- Add-on lead ballast weights (3-1/4#).
- Hand loops.
- Quick-latch repair coupler.
- Fabric repair kit.
- Anchor systems.

VARIOUS COMBINATIONS OF FLOTATION DIAMETERS, SKIRT LENGTHS, SIZES OF CHAIN BALLAST, AND SIZES OF TOP TENSION CABLE ARE AVAILABLE UPON REQUEST. ALL BOOMS CAN BE MANUFACTURED IN ANY LENGTHS TO FIT SPECIFIC REQUIREMENTS.

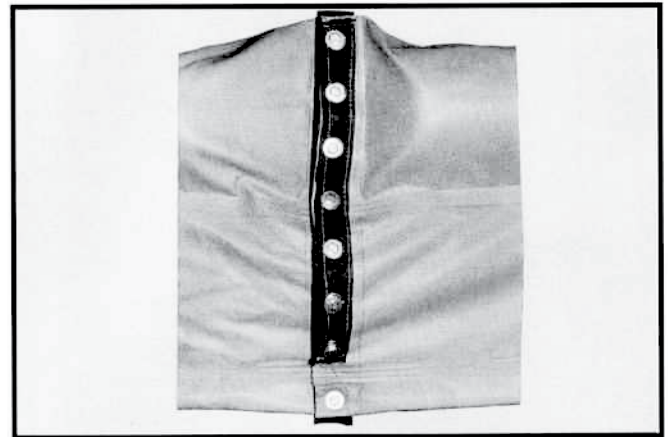
STANDARD BOOM



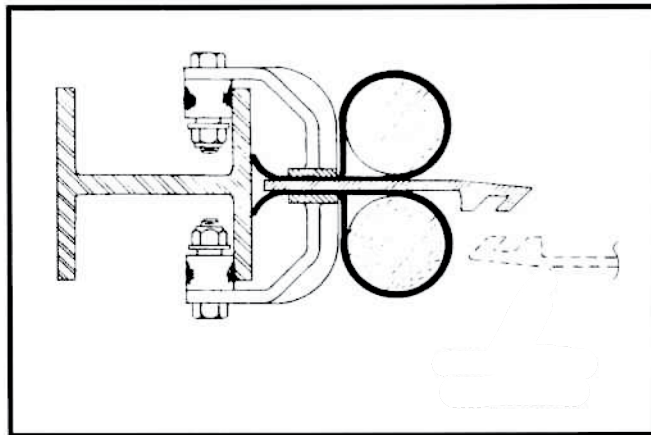
ACCESSORIES AVAILABLE



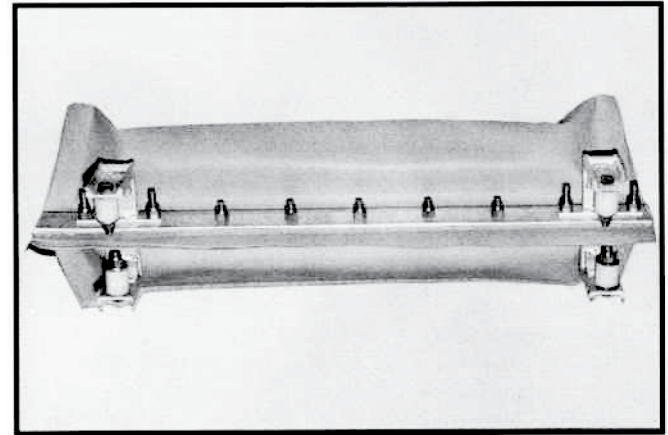
"Quick-Latch" Coupling and Tow Bridle for fast boom section makeup.



"Flexible" Coupling. For economical semipermanent application.



"Hitching-Post" Bulkhead Connector, free floating to allow boom to rise and fall with water level.



"Hitching-Post" Bulkhead Connector, as shown in engineering drawing at the left (Note lock design.)

22-OZ. JATON® FABRIC IS STANDARD